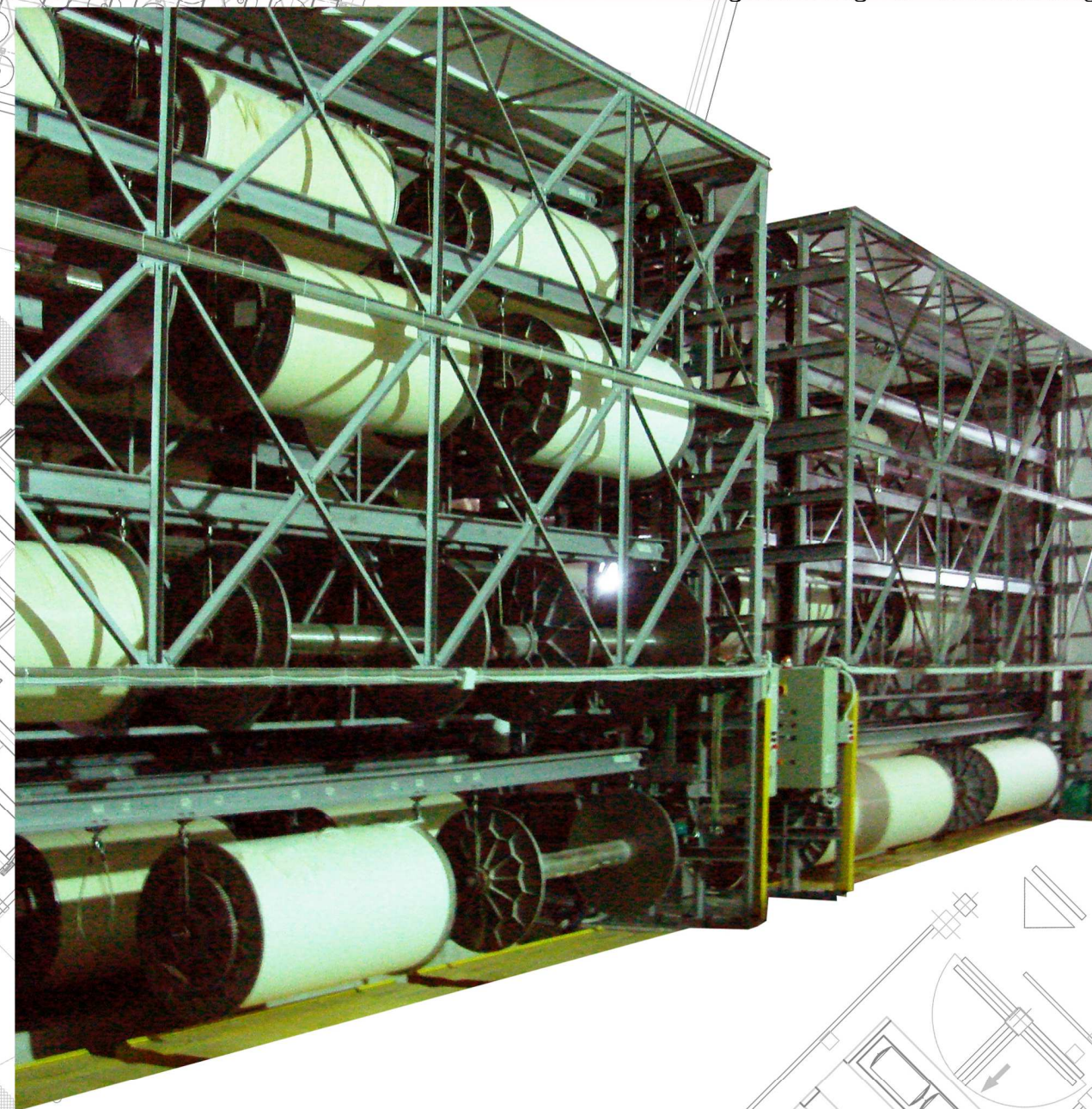
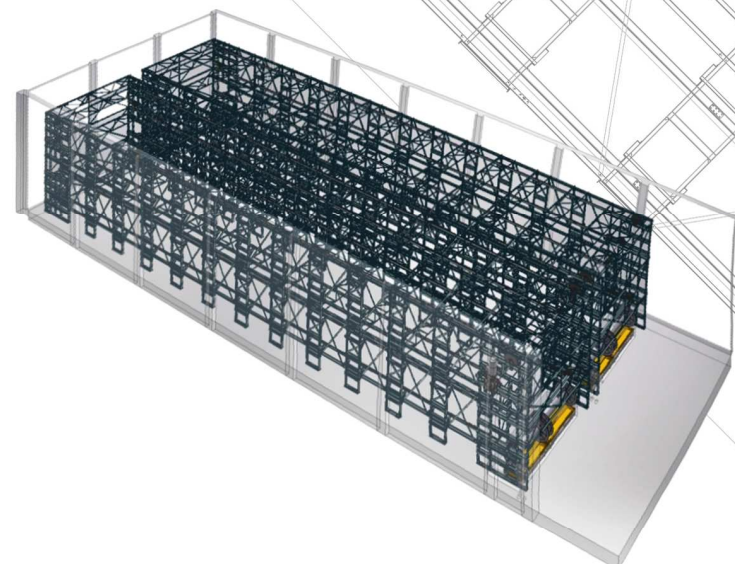
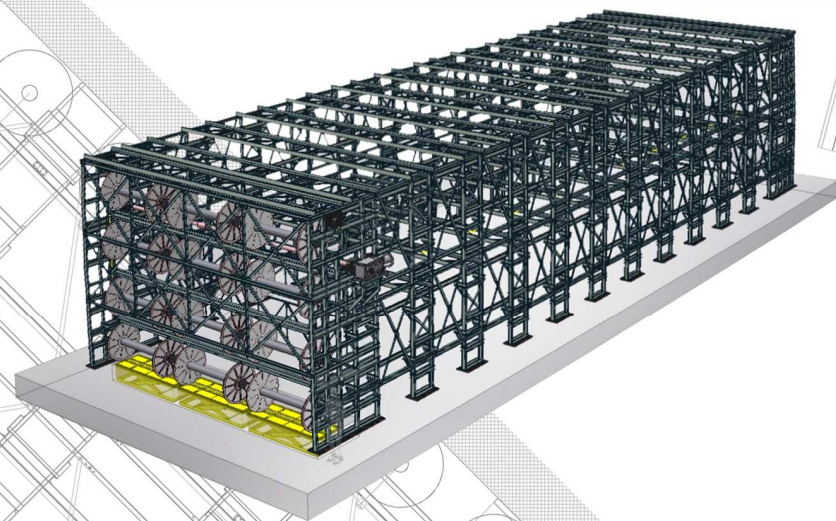


GAP *project* s.r.l.
Engineering & Consulting



STORAGE RACKS

GAP *project* s.r.l.

Engineering & Consulting

Via Federico Ozanam, 11 - 24126 Bergamo - ITALY

+39 345 0814722

info@gaproject.it - www.gaproject.it

STORES

Stores with chain translation handling for warp beams or finished fabric rolls

The here used system for storage and retrieval the most practical and simple one possible.

The reversibility of the direction of rotation of the travel chains allows the bar to be taken into the zone for loading and unloaded along the shortest way and therefore within the shortest time. For each installation, though remaining unchanged the concept of operation, a proper project will be developed, in order to make better use of the requirements for space in the hall being appointed for this aim. The system of search, is of the electronic control type, operating by means of a positioning device for the search and stop of the bar.

On request of the user it can be interfaced with its proper system of supervision for registration of the product. The technological and structural peculiarities of each single store have been studied with care, in order to achieve: minimum maintenance, safety and practicality of use. The metal frames are of sections according to DIN/UNI standards. The supporting ways for the sliding wheels are of U shape sections on which a plate of special steel is fixed for making easier the sliding of the wheels. The girders supporting the beams are of "HEB" sections by the side of which there are pins with lubricators being weld for greasing the bushes of the translation chains. Inside the sliding wheels there are mounted ball bearings with lateral protection guards, with permanent lubrication.

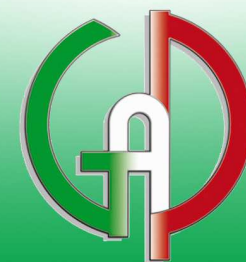
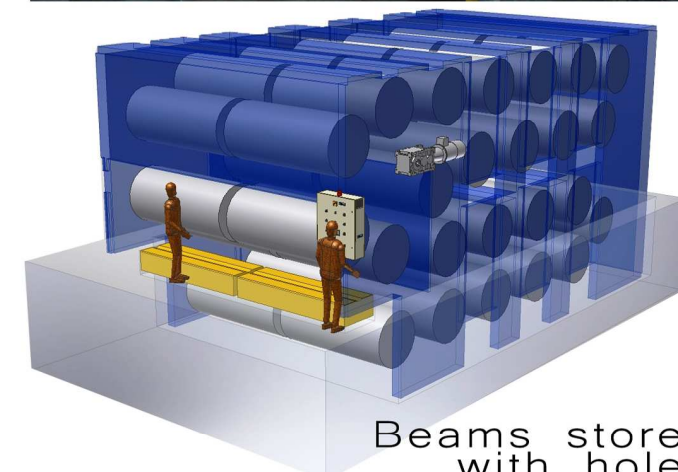
The control unit is composed of:

- Three-phase asynchrony electric motor of proper power.
- Hydrodynamic coupling for permitting a progressive start and stop and for avoiding eventual overloads.
- Electromagnetic brake, of our exclusive application, for making possible an accurate positioning of the beam supporting bar, without any inertial force.
- A speed reducer of the worm screw type of identical power and of high irreversibility.



Transmission pulleys for V-shaped belts, for transmission between motor and reducer. The translation chains are designed for a high maximum tensile stress. The speed in the two directions of run is 7 meters/min. The stores have special pinions for the translation chain. The shafts are supported by single-bloc supports with spherical orientation.

The drive chains are of the ASA-100.2 type, double run, with high resistance. Beam and fabric rolls are coupled to the bars by means of lateral chains with rings and resistant bolts and "safety" crickets. The terminal couplings are designed in relation to the typology of the loaded product. The electric control panel is arranged with IP55 protection. Photocells for safety are mounted at the side for loading/unloading. The stores are provided with lateral metal protection panels according to the rules. At the sides for loading/unloading it is possible to install hydraulic platforms for loading and unloading of the bars.



GAP project s.r.l.
Engineering & Consulting